

**POREX**

SURGICAL PRODUCTS GROUP

**MEDPOR® CONTAIN™**

*Not Available in the United States*

For Bone Graft Containment  
in Dental Procedures



# MEDPOR® CONTAIN™

*Not Available in the United States*

For Bone Graft Containment  
in Dental Procedures



**Porex Surgical, Inc.**

15 Dart Road, Newnan, GA 30265-1017 USA  
Email: [surgical.info@porex.com](mailto:surgical.info@porex.com)  
Telephone: 1-678-479-1610 • 1-800-521-7321  
Fax: 1-678-423-1435  
[www.porexurgical.com](http://www.porexurgical.com)

**Porex Surgical GmbH**

Balanstrasse 55  
81541 München, Germany  
Email: [surgical.info2@porexurgical.com](mailto:surgical.info2@porexurgical.com)  
Telephone: +49 (89) 232415-12  
Fax: +49 (89) 232415-15  
[www.porexurgical.de](http://www.porexurgical.de)



## MEDPOR® CONTAIN™

The MEDPOR® CONTAIN™ Implant is made of porous polyethylene and is intended to stabilize and support bone graft materials, provide space maintenance, and allow tissue integration in craniofacial bony defects, including defects of the maxilla, mandible and zygoma.

MEDPOR CONTAIN is an ideal material for containment of bone graft material in alveolar ridge grafting in preparation for dental implants.

## MEDPOR Biomaterial

MEDPOR is a biocompatible, porous polyethylene material. The interconnecting, omni-directional pore structure allows for fibrovascular in-growth and integration of the patient's tissue. More than 250,000 procedures have been performed with porous polyethylene and more than 350 clinical reports in cranial, reconstructive, oculoplastic and aesthetic applications have been published.

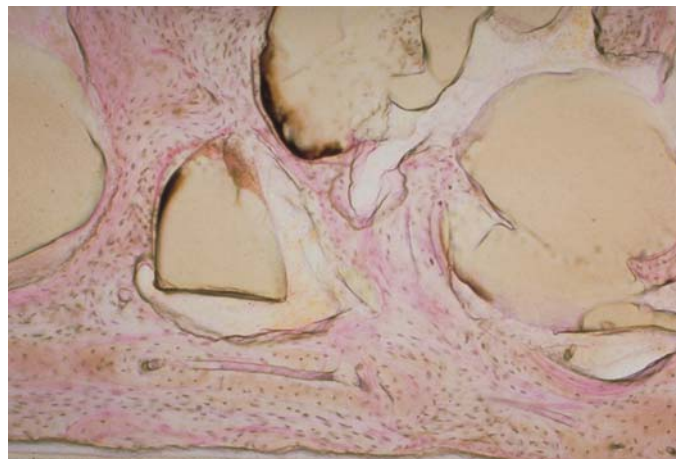
***MEDPOR® CONTAIN™ is an ultra-thin MEDPOR® Sheet designed specifically for use in dental procedures requiring bone graft containment.***





## Tissue Ingrowth

MEDPOR Biomaterial allows for tissue ingrowth because of its interconnecting open pore structure. Animal data has demonstrated that MEDPOR surgical implant material permits tissue ingrowth. Histologic analyses of biopsies from human implants have also demonstrated tissue ingrowth.



## MEDPOR CONTAIN Features and Benefits

- Biocompatible MEDPOR has 20 years of proven use in cranial-maxillofacial procedures with a low risk for complications
- MEDPOR Biomaterial can be bent and cut easily to fit to individual patient contours
- MEDPOR CONTAIN is easily fixated with tacks, screws or sutures – convenient, saves time, stays in place
- Structural integrity – helps maintain space for graft material to be effective
- Allows for fluid exchange – allows bone graft material to receive nutrients required to form bone
- Because of the white color of the biomaterial, it will not show through overlying tissue
- During dental implant placement, non-crestal portions of the CONTAIN Implant can remain in place
- Permits soft tissue integration

## MEDPOR CONTAIN Non-sterile Sample

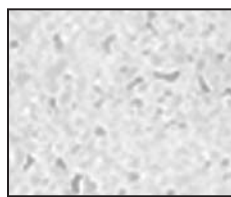
## MEDPOR CONTAIN 0.25mm Sheet

  
Thickness shown at 400%



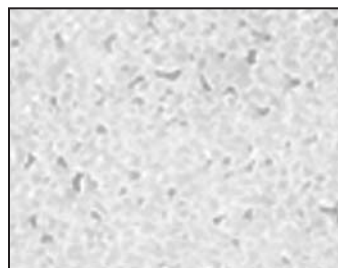
15mm x 30mm

Catalog number 81060



25mm x 30mm

Catalog number 81061



45mm x 35mm

Catalog number 81062

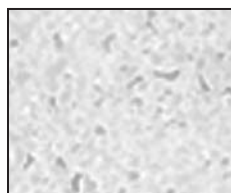
## MEDPOR CONTAIN 0.35mm Sheet

  
Thickness shown at 400%



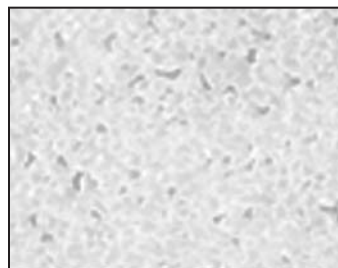
15mm x 30mm

Catalog number 81063



25mm x 30mm

Catalog number 81064



45mm x 35mm

Catalog number 81065

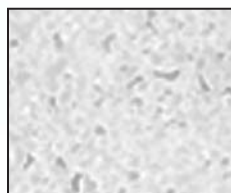
## MEDPOR CONTAIN 0.45mm Sheet

  
Thickness shown at 400%



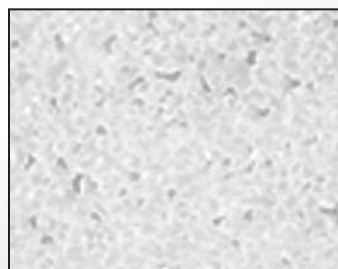
15mm x 30mm

Catalog number 81066



25mm x 30mm

Catalog number 81067



45mm x 35mm

Catalog number 81068